

WHAT HAPPENS TO MY RECYCLING?



1. The yellow recycling bin is for the disposal of clean plastics, white polystyrene, paper, cardboard, tins, cans, glass bottles and jars.

Residents place the yellow bin at the kerbside on their designated collection day.



2. On collection day, the collection truck comes along and empties the yellow recycling bin into the truck and returns the bin to the kerbside.

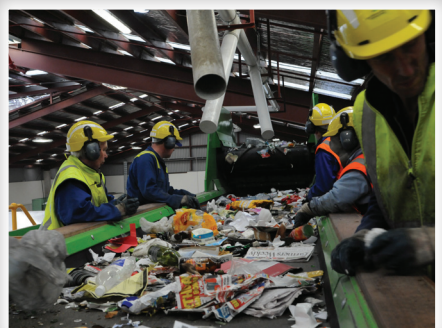


3. When full, the collection truck takes the recycling to the Material Recovery Facility or MRF (pronounced "Murf") in Invercargill which is operated by Southland disAbility Enterprises.

The trucks empty the recycling onto the floor, where it waits to be loaded into the hopper.



4. The loader picks up the recycling and places it into the hopper. The hopper feeds the series of conveyor belts that take the recycling to the sorting lines.



5. The first sorting line separates cardboard boxes, plastic bags, glass and non-recyclable items (rubbish).

The plastic bags are sucked up into the white plastic pipes (hanging from the ceiling) which empty the bags into a cage.



6. This is the paper/cardboard sort line. Staff makes sure that only paper and cardboard continue on this conveyor belt.

The conveyor belt leads to Carter Holt Harvey Full Circle's area of the building. Carter Holt bales the paper and cardboard and transports it to their paper mills (to make it into new paper/cardboard products).



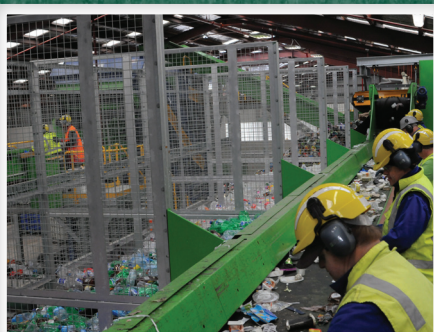
7. Before going to the final sort line the recyclables pass over a magnet. The magnet pulls the metals from the conveyor belt separating the metals from the other recyclables.



8. Here aluminium or steel cans have been separated from the other recyclables and are being taken to the baling machine to be pressed into a bale for easier handling.



9. The final sort line is for the plastics. By the time the recycling gets to this line, the MRF team have already separated the cardboard, plastic bags, glass bottles and jars, paper, tin and aluminium cans.



10. The plastic sort line is responsible for separating the plastics into their different types i.e. milk bottles, clear plastic, coloured plastic, janitorial bottles, containers and packaging.



11. Once the MRF team have separated the recycling, they bale the separated products. Here are bales of tin cans, clear plastic bottles and milk plastic bottles.

The baled products are then loaded into shipping containers and transported to various national and international manufacturers to be made into new products.



12. Thank you to the Southland disAbilities Enterprises MRF Team who sort our recyclables. The Southland community cannot recycle without you.

Please remember to keep your recycling clean and only put approved recycling into the yellow bin. (No clothing, food waste, bricks, stones or concrete, balewrap, machinery parts or electrical appliances please – as these products can damage machinery).

